

EN



MANOMETAL

AUTOMATIC LATHES | ASSEMBLING PARTS



Manometal is a modern and competitive manufacturer of automatic lathes in South Tyrol. Qualified and motivated employees as well as innovative, modern, and flexible manufacturing technologies are Manometal's working capital in the economic powerhouse of South Tyrol.

The Executive Management, Herbert Schmucker, Jörg Schmucker, and Thomas Ebner, as well as the entire team are meeting a great challenge: to operate – in an international field – an automatic lathe and metal processing plant for high-quality products which we built up

from nothing. In order to achieve this, we planned, researched, worked, and even fought for many years: The results speak for themselves.

A harmonious atmosphere among the in-house trained employees is essential for an economically healthy factory. These employees represent the foundation of our success. And we expend a lot of effort to keep it that way.

Leading industrial concerns in Europe appreciate our goal, which is not only to satisfy, but also delight our customers. A stream of awards, quality certifications, and glowing delivery evaluations testify to this and continue to drive us to maintain this level of excellence.

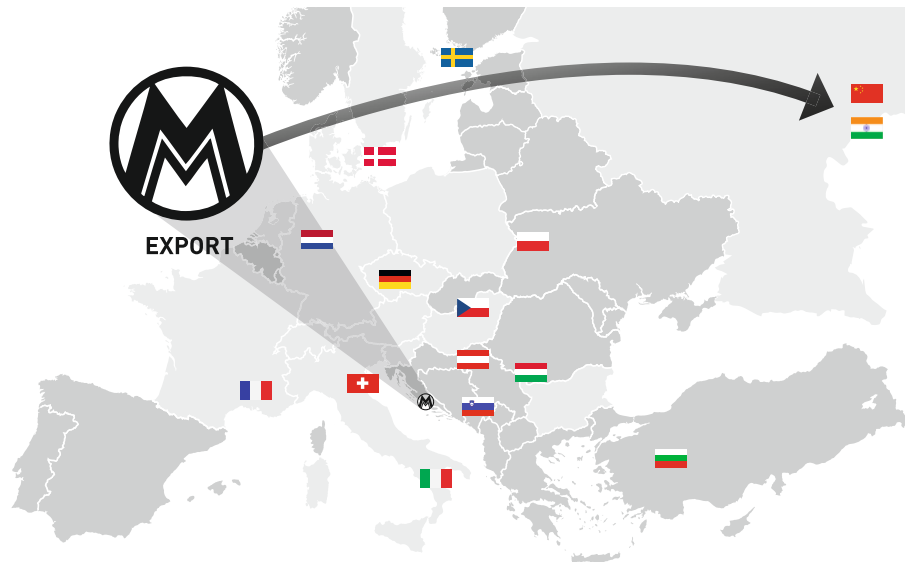


CUSTOMERS: SUPPORT & DEMANDS

Here at Manometal, we are continuing our efforts to constantly improve the serial manufacture of precision turned parts in keeping with current and international market requirements. To do this, we employ the latest technology. Extremely modern turning technology applied by experienced and highly motivated employees are the main characteristics of Manometal.

In order to comply with these requirements, Manometal constantly invests in the latest CNC automatic lathes and manufacturing stations.

Through the use of high-quality manufacturing processes requiring only low labor costs, together with dependable delivery, Manometal has managed to gain the long-term trust of its customers and counter the encroachment of companies from low-wage countries.

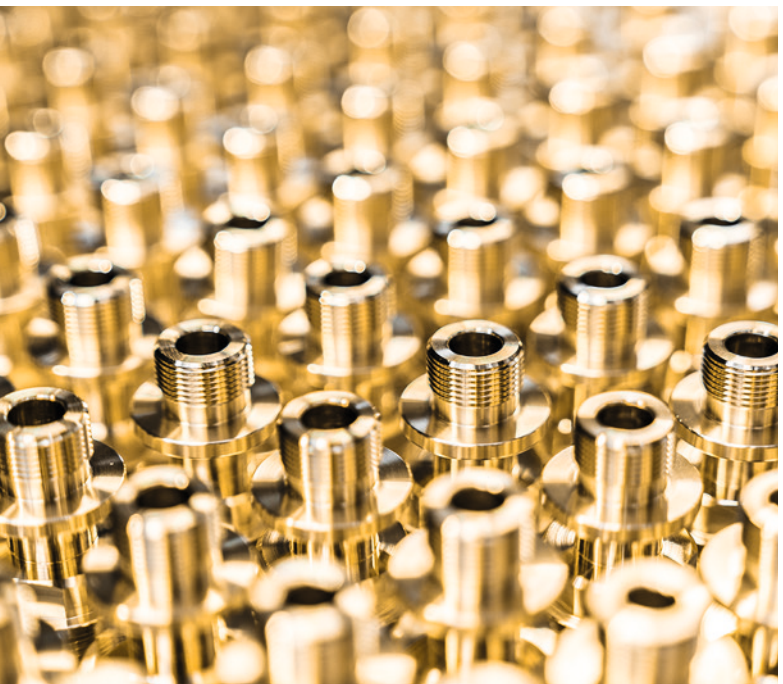




OUR MANUFACTURING PHILOSOPHY

Long-term in-house and external developments in the machine and manufacturing sector combined with constant in-house employee training yield low-cost work processes. By the same token, our working life is oriented towards Quality Certification according to ISO 9001, ISO 14001 and ISO 45001, which are

the cornerstone for the quality, workplace safety, and environmental protection we have achieved and continue to improve. This is rounded off by the organization model - GvD 231/2001 - which was introduced in 2018 and is lived on a daily basis. See our Code of Ethics at www.manometal.com for details.





SERVICES



Precision turned parts



Surface Treatment



Assembly parts



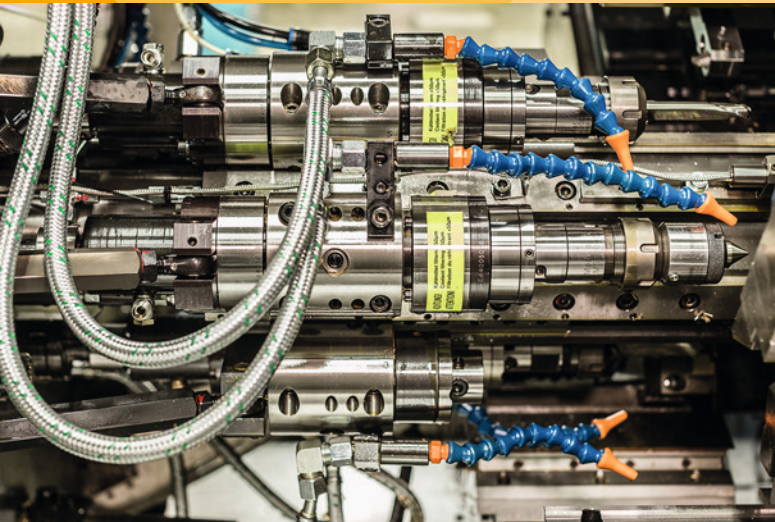
Bending parts



Screw connections



Packaging



MACHINERY

MULTI-SPINDLE AUTOMATIC LATHES

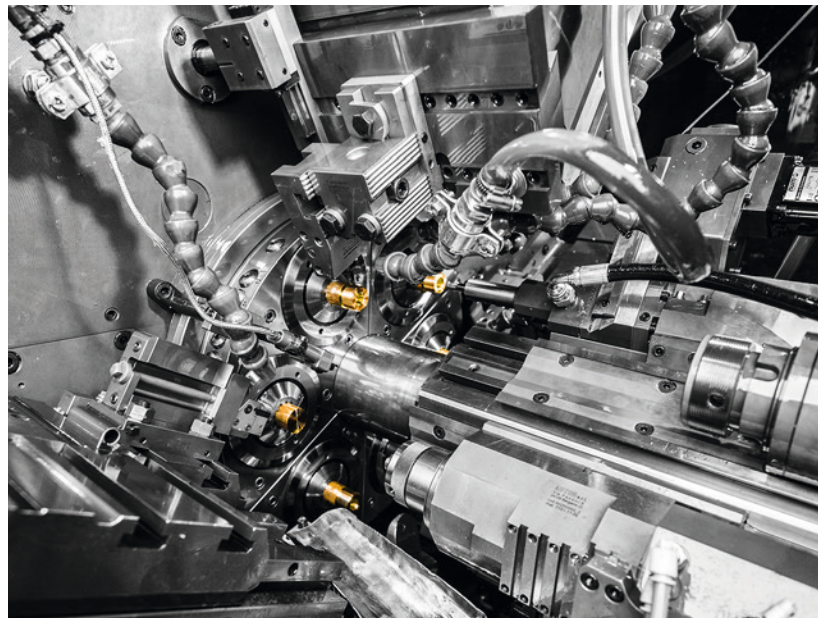
8 multi-spindle automatic lathes are available for the production of large quantities of high-quality and challenging products.

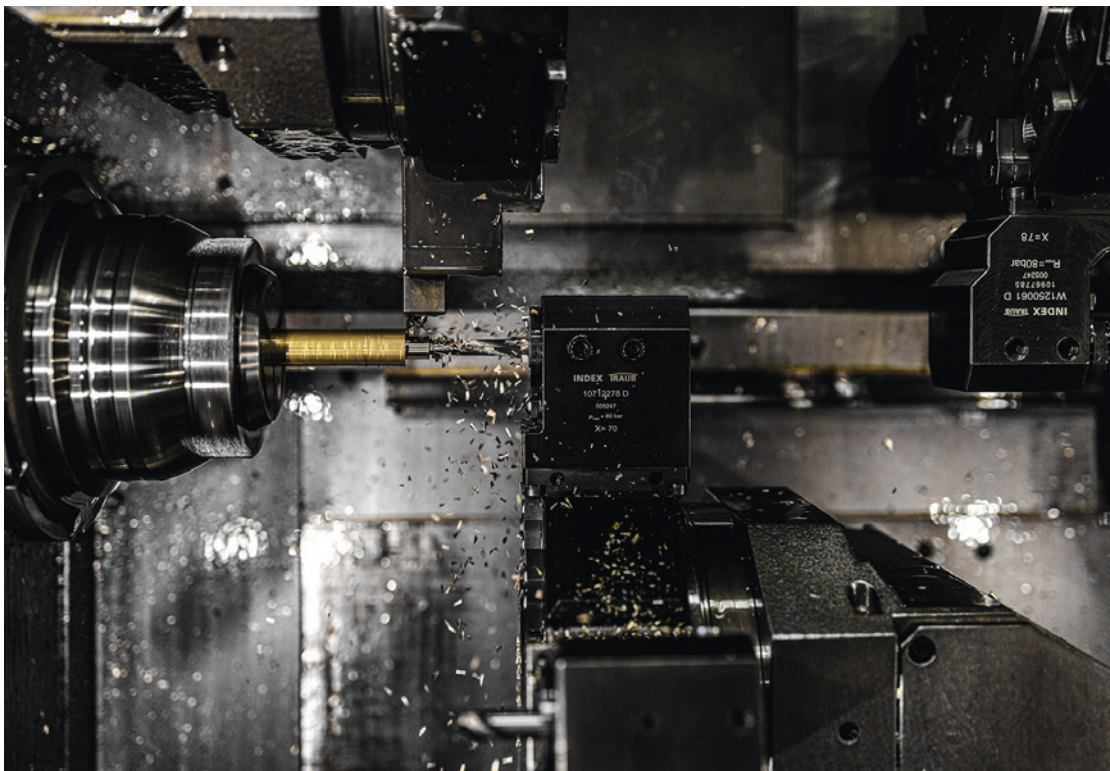
Turned parts from Ø 6mm - Ø 40mm

CNC MULTI-SPINDLE AUTOMATIC LATHES

7 CNC multi-spindle automatic lathes produce medium to large quantities of the most challenging and precise turned parts.

Turned parts from Ø 6mm - Ø 40mm

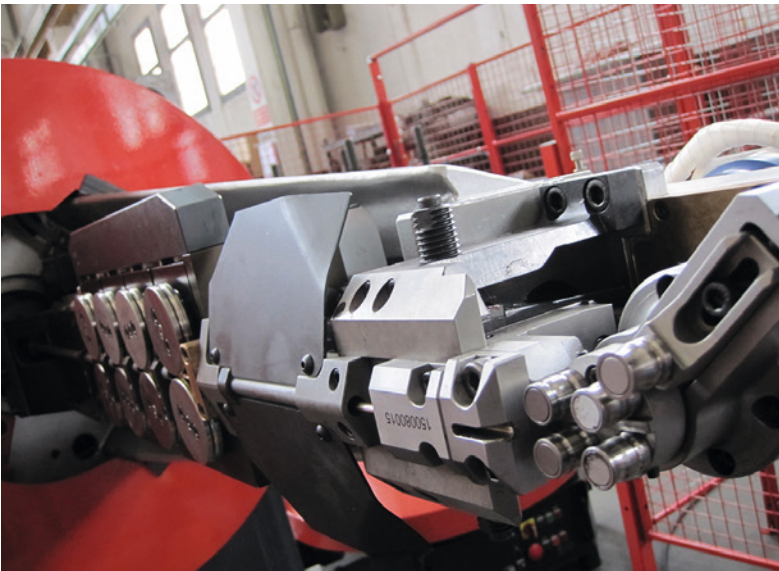




CNC SINGLE-SPINDLE AUTOMATIC LATHES

28 CNC single-spindle automatic lathes are available for the production of your precision turned parts.

Turned parts from Ø 6mm - Ø 40mm



CNC BENDING MACHINES

Our CNC bending machines allow us to produce a wide range of bent wire parts by bending, shaping, compressing, pressing and rounding. The machine is fully automatic: Production, counting and packaging. Like all our precision turned parts, our bent wire parts also correspond to our latest quality standards.

Bent wire parts up to Ø 8mm

ENVIRONMENTALLY FRIENDLY AND GENTLE PART-CLEANING

We use not only a gentle small container to avoid surface damages, but a fully-automatic and alcohol-based washing station also ensures environmentally friendly and gentle cleaning processes.



PROCESSING MATERIALS

84%*



BRASS ALLOYS

CW614N - CuZn39Pb3
CW617N - CuZn40Pb2
CW602N - CuZn36Pb2 As
CW626N - CuZn33Pb1,5AlAs

8%*



LEAD FREE & LOW-LEAD ALLOYS

CW724R - CuZn21Si3P (Cuphin)
CW511L - CuZn38As
CW510L - CuZn42
CW508L - CuZn37
CW725R - CuZn33Pb1AlSiAs (Aquadarin)
CW626N - CuZn33Pb1,5AlAs
AVZ - 11SMn30 (Stahl 1.0715)
AVZ - 11SMn37 (Stahl 1.0736)
2033 - lead free aluminium

5%*



STAINLESS STEEL ALLOYS

AISI 303 - 1.4305 - X8CrNiS18-9
AISI 304 - 1.4301 - X5CrNi18-10
AISI 430F - 1.4104 - X14CrMoS17
AISI 316Ti - 1.4571 - X6CrNiMoTi17-12-2
AISI 316L - 1.4404 - X2CrNiMo17-12-2

1%*



STEEL ALLOYS

AVP - 1.0718 - 11SMnPb30K
AVP - 1.0737 - 11SMNPb37K
AVZ - 1.0715 - 11SMN30
AVZ - 1.0736 - 11SMN37

1%*



ALUMINUM ALLOYS

Lega 2011 DIN AlCuBiPb
Lega 2030 DIN AlCuMgPb
Lega 6012 DIN AlMgSiPb
Lega 6023 DIN AlMgSiSnBi
Lega 2033 (lead free)

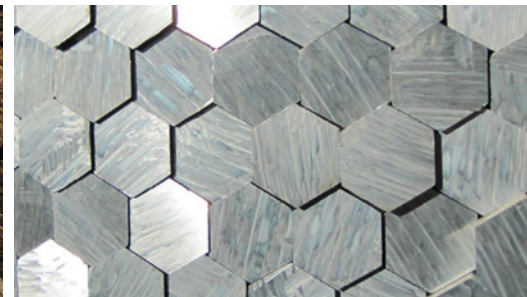
1%*



SPECIAL MATERIALS

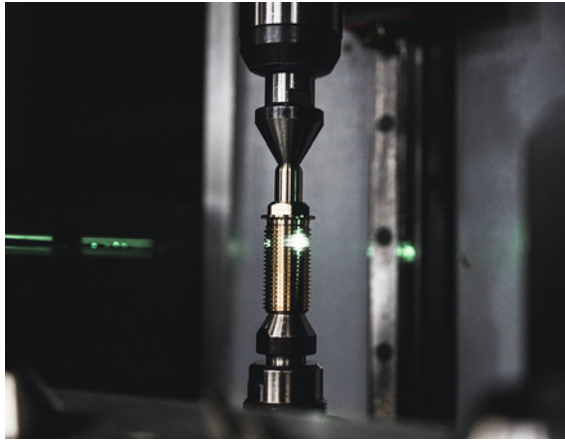
CW113C - CuPb1P (Copper based)
CW306G - CuAl10Fe3Mn2 (Copper based)
Plexiglas (Plastic based)

* of our production



RANGE OF PARTS INCL. ASSEMBLING PARTS





NEW
CLASSIFICATION/
SORTING OF TURNED
PARTS ACCORDING
TO CUSTOMER
WISHES!

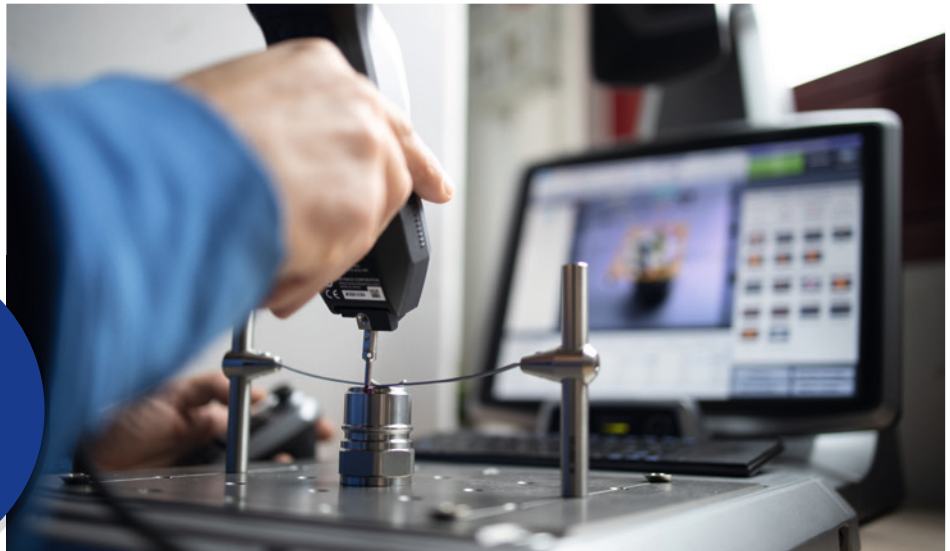
USP-UNIQUE SELLING POINT

Through the application of a focused strategy in the framework of an overall manufacturing concept, Manometal can be proud of its large and loyal customer base. With regards to our entire line of products made using an advanced SPC program, Manometal attaches special importance to process reliability.

Manometal products differ from other products available on the market made by other manufacturers by:

- **High surface quality**
- **High and measurable quality**
- **High functionality, particularly in fine threads**
- **High packaging variants**
- **High punctuality on deliveries**

Throughout the production process and process control, Manometal attaches the greatest importance to the use of high-quality SPC programs. Experienced and constantly trained employees who are well-informed about customer requirements supervise all production processes to ensure defect-free and punctual deliveries.





The Manometal team is looking forward to receiving your inquiry.

We are here for you and hope we can establish a long-term relationship.

We are glad to actively support our customers and provide them with quick and precise offers.

Take our work and profit from our manufacturing philosophy.

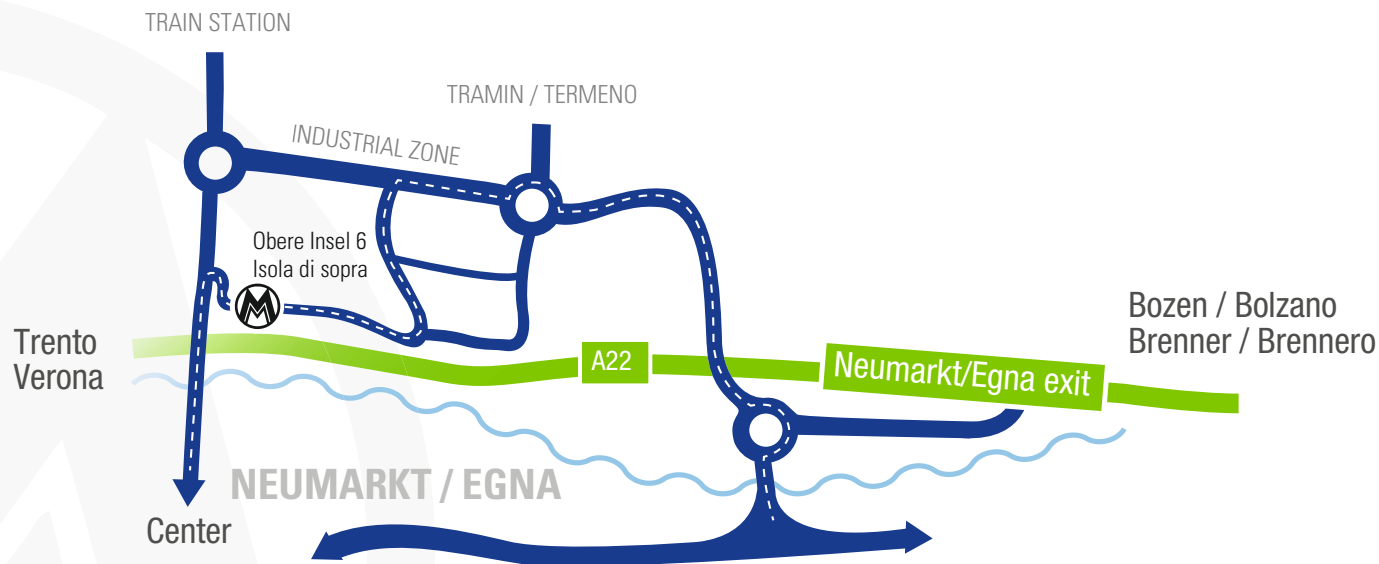
**Precise turned parts?
Then turn to**



MANOMETAL

A company from
südtirol





MANOMETAL GMBH

Obere Insel 6 | Isola di Sopra
I-39044 Neumarkt | Egna, South Tyrol
Phone +39 0471 81 20 19
manometal@manometal.com

www.manometal.com

See new things, follow trends,
and experience innovation

Welcome to



MANOMETAL

